

# BUY LOCAL!

**Why Buy Local Food?**  
THE SOCIAL, ENVIRONMENTAL, ECONOMIC BENEFITS TO YOUR COMMUNITY

**ECONOMIC IMPACT**

Each dollar spent at independent local businesses returns **3X** more money to your community than a chain store or non-local product.

If every Michigan household spends **\$10 = \$1.6 BILLION** added to state economy per week on local food

**FARMERS NEED MULTIPLE MARKETS TO BE SUSTAINABLE.**

**FARMER DIRECT SALES**

- Farmers Markets
- CSA Shares

**FARMER INDIRECT SALES**

- Wholesale
- Restaurant
- Retail

**SOCIAL IMPACT**

On average people who shop at farmers markets have 15-20 social interactions per visit!

**ENVIRONMENTAL IMPACT**

**MORE THAN ONE MILLION ACRES OF U.S. FARMLAND** is lost each year due to residential and commercial development.

Conventional food distribution uses at least **4X MORE FUEL** than local and regional systems.

To transport food long distances it's often picked while unripe then gassed to "ripen" it after transport, or it is highly processed with preservatives.

**KNOW WHERE YOUR FOOD COMES FROM**

- KNOW THE FARMERS
- ASK ABOUT THEIR GROWING PRACTICES
- VISIT THE FARM

A typical American meal travels an average of **1,500 miles** to get to you

**ENVIRONMENTAL IMPACT**

- PROTECTS LOCAL LAND
- GROW LOCAL FOOD
- BUY LOCAL FOOD
- BUILD LOCAL RELATIONSHIPS
- MORE LOCAL SPENDING
- GROW LOCAL JOBS

**LOCAL FARMER**

**LOCAL DIFFERENCE**

localdifference.org

## Things to consider when choosing a CSA



Are the pick-up options convenient?



How much are you willing to pay and what are the payment options?



What is the share size?



How long does the season last?



What kind of produce are you looking for?



Do you want organic produce?



Do you want non-GMO produce?

# Composting Creates Jobs

Jobs are sustained in each stage of the organics recovery cycle.

PER 10,000 TONS WASTE/YEAR

JOBS SUSTAINED



**Green infrastructure** uses compost in rain gardens, green roofs, bioswales, vegetated retaining walls, and on steep highway embankments to control soil erosion and storm water. Using compost in green infrastructure creates **even more jobs**.



On a per-ton basis, making compost alone, employs **2x more workers than landfills** and **4x more than incinerators**.



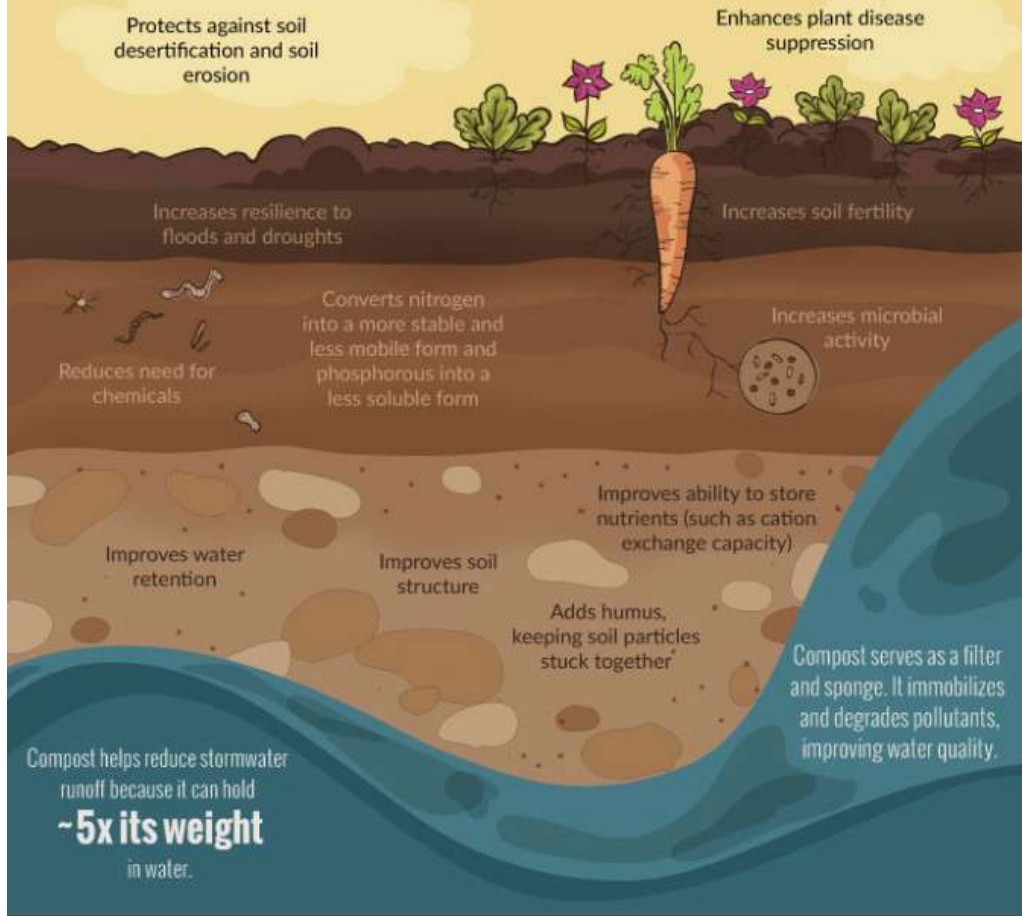


When added to soil, compost can filter out urban stormwater pollutants by an astounding **60-95%**




## IT'S ALL ABOUT THE SOIL

**COMPOST** improves biological, chemical, and physical characteristics of soil.





 rain barrel



**Do you have a rain barrel?**

<  YES  NO



A rain barrel can save you around 1,300 gallons of water for use outdoors during the peak summer months.

